

# 1200S.com

Visit us for all your Technics 1200 / 1210 needs...

Keeping the legend alive!

1-833-SL1200S (751-2007)

# Service Manual

Direct Drive Turntable System

Turntable System

## SL-1200M3D

**Colour**

(S).....Silver Type

**Areas**

(P).....U.S.A.

(PC).....Canada.

### ■ Specifications

**■ General**

<b>Power supply:</b>	AC 120V, 60Hz
<b>Power consumption:</b>	14W
<b>Dimensions (WxHxD):</b>	453 x 162 x 353 mm (17-27/32" x 6-12/32" x 13-29/32")
<b>Weight:</b>	12 kg (26.4 lb.)

**■ Turntable section**

<b>Type:</b>	Quartz direct drive Manual turntable
<b>Drive method:</b>	Direct drive
<b>Motor:</b>	Brushless DC motor
<b>Turntable platter:</b>	Aluminum diecast Diameter 332 mm (13-5/64") Weight 1.7 kg (3.74 lb.)
<b>Turntable speeds:</b>	33-1/3 rpm and 45 rpm
<b>Starting torque:</b>	1.5 kg-cm (1.3 lb-in)
<b>Build-up characteristics:</b>	0.7s. from standstill to 33-1/3 rpm
<b>Braking system:</b>	Electronic brake
<b>Wow and flutter:</b>	0.01% W.R.M.S.* 0.025% W.R.M.S. (JIS C5521) ±0.035% peak (IEC 98A Weighted)
<b>Rumble:</b>	-56 dB (IEC 98A Unweighted) -78 dB (IEC 98A Weighted)

\*This rating refers to turntable assembly alone, excluding effects of record, cartridge or tonearm, but including platter. Measured by obtaining signal from built-in frequency generator of motor assembly.

**■ Tonearm section**

<b>Type:</b>	Universal
<b>Effective length:</b>	230 mm (9-1/16")
<b>Arm height adjustment range:</b>	0 – 6 mm
<b>Overhang:</b>	15 mm (19/32")
<b>Effective mass:</b>	12 g (without cartridge)
<b>Offset angle:</b>	22°
<b>Friction:</b>	Less than 7 mg (lateral, vertical)
<b>Tracking error angle:</b>	Within 2°32' (at the outer groove of 30 cm <12"> record) Within 0°32' (at the inner groove of 30 cm <12"> record)
<b>Stylus pressure adjustment range:</b>	0 – 4 g
<b>Applicable cartridge weight range:</b>	11 – 20.5 g (including headshell)
<b>(with auxiliary weight);</b>	9.5 – 13 g 17 – 20.5 g (including headshell)
<b>(with shell weight);</b>	3.5 – 6.5 g 11 – 14 g (including headshell)
<b>Headshell weight:</b>	7.5 g

**Note:**

Specifications are subject to change without notice.  
Weight and dimensions are approximate.

**⚠ WARNING**

This service information is designed for experienced repair technicians only and is not designed for use by the general public. It does not contain warnings or cautions to advise non-technical individuals of potential dangers in attempting to service a product. Products powered by electricity should be serviced or repaired only by experienced professional technicians. Any attempt to service or repair the product or products dealt with in this service information by anyone else could result in serious injury or death.

# Technics®

© 1999 Matsushita Electric Industrial Co., Ltd.  
All rights reserved. Unauthorized copying and distribution is a violation of law.

## ■ Replacement Parts List

Notes: \* Important safety notice:

Components identified by  $\triangle$  mark have special characteristics important for safety.

Furthermore, special parts which have purposes of fire-retardant (resistors), high-quality sound (capacitors), low-noise (resistors), etc. are used.

When replacing any of components, be sure to use only manufacturer's specified parts shown in the parts list.

\* All parts are supplied by MESA.

\* The "<IA> <IB>" marks in Remarks indicate language of operating instructions.

<IA> : English

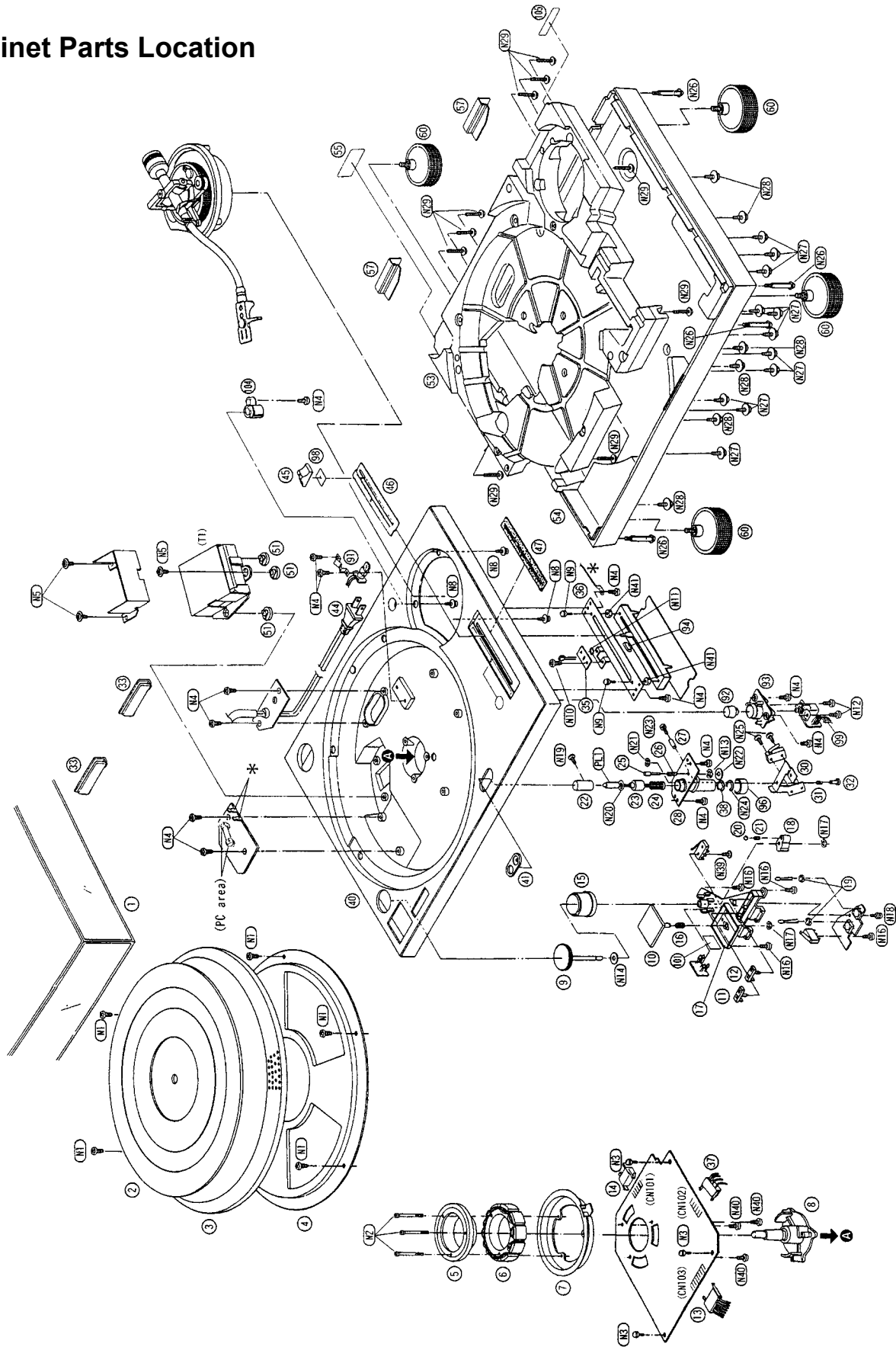
<IB> : Canadian French

Ref.No.	Part No.	Part Name & Description	Pcs	Remarks
1	SFAD122-01A	DUST COVER	1	
2	RGS0008	T/T RUBBER MAT	1	
3	SFTE172-01Z	TURNTABLE ASS'Y	1	
4	SFUM172-053	PANEL COVER	1	
5	SFMGQ20-01	DRIVE COIL COVER	1	
6	SFMG520-31A	DRIVE COIL ASS'Y	1	
7	SFMZ172-01E	FG COIL ASS'Y	1	
8	SFMZQ20-01A	SHAFT ASS'Y	1	
9	RFKN1200M3DP	POWER SW KNOB ASS'Y	1	
10	SFKT015-061	BUTTON,START/STOP	1	
11	SFKT015-011E	BUTTON,SPEED SELECTOR(33)	1	
12	SFKT015-021E	BUTTON,SPEED SELECTOR(45)	1	
13	SFDJ122-02E	WIRE ASS'Y	1	
14	SFDJ122-06E	WIRE ASS'Y	1	
15	RGK0942Z-S	COVER,STROBE ILLUMINATOR	1	
16	SFQA122-01	SPRING	1	
17	RMR1111A-K	BASE,OPERATION	1	
18	SFUM122-03	CAM,POWER SWITCH	1	
19	SFUM015-11	SPACER,LED	2	
20	SFYB5-32	BALL	1	
21	SFQA520-01	SPRING	1	
22	SFKK172-01	COVER,STYLUS ILLUMINATOR	1	
23	SFXB122-06	DRIVE BOSS	1	
24	SFQA172-01	SPRING	1	
25	SFXJ172-01	PIN,LOCK CANCELER	1	
26	SFQA520-011	SPRING	1	
27	SFX0172-01-1	PIN,GUIDE	1	
28	SFUP122-02E	BRACKET,ILLUMINATOR	1	
30	SFUP122-03	PLATE,LOCK OPERATION	1	
31	SFQA122-02	SPRING	1	
32	SFXJ172-05	PIN	1	
33	RMG0483-K	RUBBER,DUST COVER	2	
35	SFUP122-09	HOLDER,LED	1	
36	SFUP122-01	BRACKET,PITCH CONTROL	1	
37	SFDJ122-04E	WIRE ASS'Y	1	
38	SFUP122-15-1	STOPPER,SPRING	1	
40	RKM0101D-S	CABINET	1	
41	SFUM172-04	ORNAMENT,ILLUMINATOR	1	
44	SFUP122M12E2	AC CORD ASS'Y	1	
45	SFKT122-02	KNOB,PITCH CONTROL	1	
46	RGH0131-S1	ORNAMENT,PITCH CONTROL	1	
47	SFUZ122-01	FELT	1	
51	SFGC122-01	RUBBER	3	
53	SFAU122-032	BOTTOM COVER B	1	
54	SFAU122-022	BOTTOM COVER A	1	
55	RGN1655-K	NAME PLATE	1 P	
55	RGN1656-K	NAME PLATE	1 PC	
57	SFUP122-233	SUPPORTER(A)	2	
60	SFGC122-04E	INSULATOR	4	
70	SFPRT17201K	ARM REST	1	
71	RFKN1200MK2A	ARM BASE ASS'Y	1	
73	SFPKD12201	BRACKET,ARM BASE	1	
74	SFPAB17206	KNOB,ANTI-SKATING CONTROL	1	
76	SFPCC31005K	HEAD SHELL	1	
76-1	REZ1037-1	WIRE KIT	1	
77	P-AM18201K	TONEARM ASS'Y	1	
78	SFPWG17201K	BALANCE WEIGHT	1	
79	SFPRT18201K	ARM LIFT	1	
80	SFQA829-03	SPRING	1	

Ref.No.	Part No.	Part Name & Description	Pcs	Remarks
81	SFPAB13202	KNOB,LIFT	1	
82	SFPAB18201K	TONEARM FIXING PLATE	1	
83	SFPJL18202K	OIL DAMPER	1	
84	SFPZB12201K	PLATE	1	
85	SFPZB12203	PLATE,ARM BASE COVER	1	
86	SFUM170-06	SPACER,PHONO CORD	1	
87	SFPZB12204	CLAMPER,PHONO CORD	1	
88	RJL2P001B12	PHONO CORD	1	
89	SFEL026-01E1	GROUND WIRE	1	
90	SFPZB17202	KNOB,ARM LOCK	1	
91	N092	SPACER	1	
92	RGU0611-S	BUTTON,PITCH CONT.RESET	1	
93	RMR0945-K	PLATE,PITCH CONTROL RESET	1	
94	RMX0124	SPACER	1	
96	SFGZ122-021	RUBBER	1	
98	SFXW172-032	SPACER,PITCH CONTROL	1	
99	REZ0836	FLAT CABLE	1	
101	SFUZ122-04	SHEET	1	
104	RMR1112-K	SHELL STAND	1	
105	RQLC0142	TECHNICS LABEL	1	
A1	RQT4912-P	O/I BOOK	1	P,PC <IA>
A1	RQT4913-C	O/I BOOK	1	PC <IB>
A2	RQA0149	WARRANTY CARD	1	P
A2	SQX7183	WARRANTY CARD	1	PC
A3	SFWE010	EP record ADAPTOR	1	
A4	RHN26003	NUT,CARTRIDGE	2	
A5	SFCZV8801	SCREW,CARTRIDGE	2	
A6	SFPEV9801	SCREW,CARTRIDGE	2	
A7	SFPEW9601	WASHER	2	
A8	SFPZB3501	SHELL WEIGHT	1	
A9	SFPWG17202	AUXILIARY WEIGHT	1	
A10	SFK0135-01	OVERHANG GAUGE	1	
A11	RGS0005Z	DISC SLIP SHEET ASSY	1	
A12	RQLC0142	TECHNICS LABEL	1	
A13	RQCB0391	SERVICENTER LIST	1	P
A13	RQCB0832	SERVICENTER LIST	1	PC
$\triangle$ C1	ECA1HM471S	50V 470U	1	
C2	RCE1EU330BV	25V 33U	1	
C3	ECEA1EKA220B	25V 22U	1	
$\triangle$ C5,6	ECQM1223KZ3	125V 0.022U	2	
C101-03	RCE1EU330BV	25V 33U	3	
C104-07	ECQV1H104JM3	50V 0.1U	4	
C108	ECA1EM101	25V 100U	1	
C109,10	ECQV1H104JM3	50V 0.1U	2	
C111	ECQB1H562JF3	50V 5600P	1	
C112	RCE1HKA4R7BG	50V 4.7U	1	
C201	RCE1AKA330BG	10V 33U	1	
C202,03	ECEA1HKS010	50V 1U	2	
C204	ECQV1H473M3	50V 0.047U	1	
C205	ECA0JM221	6.3V 220U	1	
C206	ECEA1HKS010	50V 1U	1	
C207	ECCR1H101K5	50V 100P	1	
C208	ECCR1H220KU5	50V 22P	1	
C209	RCE1AU101BV	10V 100U	1	
C210,11	ECQV1H224JM3	50V 0.22U	2	
C212	RCE1HKA3R3BG	50V 3.3U	1	
C213	ECCR1H471K5	50V 470P	1	
C214	RCE1AU101BV	10V 100U	1	
C215	ECEA1HKS010	50V 1U	1	
C216	RCE1AKA470BG	10V 47U	1	
C217-19	ECFR1H104ZF	50V 0.1U	3	
C301	ECQK1333GZ	125V 0.033U	1	
C302	ECQK1682GZ	125V 6800P	1	
C303	ECEA1HKS010	50V 1U	1	
C304	RCE1CKA100BG	16V 10U	1	
C305	ECQB1H122JF3	50V 1200P	1	
C306	ECEA1HKS010	50V 1U	1	
$\triangle$ C601	ECQU2A473MY	100V 0.047U	1	
CN101	EMCS0360L	CONNECTOR(3P)	1	
CN102	EMCS0460L	CONNECTOR(4P)	1	
CN103	EMCS0760L	CONNECTOR(7P)	1	

Ref.No.	Part No.	Part Name & Description	Pcs	Remarks	Ref.No.	Part No.	Part Name & Description	Pcs	Remarks
△D1	D2SBA20	DIODE	1		△Q1	2SD1265-0	TRANSISTOR	1	
△D3	MA4051M	DIODE	1		△Q2,3	2SD637-QRS	TRANSISTOR	2	
D201,02	SVDP3902S-9	LED	2		△Q201	2SC1846-QRS	TRANSISTOR	1	
D203,04	SVDEBR5505S	LED	2		Q202	2SD637-QRS	TRANSISTOR	1	
D204A	MA165	DIODE	1		Q203	2SC2458GR	TRANSISTOR	1	
D205,06	SVDEBR5505S	LED	2		R1	ERDS2FJ562	1/4W 5.6K	1	
△D301	MA4051M	DIODE	1		R2	ERDS2FJ682	1/4W 6.8K	1	
D301A	GL8EG21	LED	1		R3	ERDS2FJ272	1/4W 2.7K	1	
△F1	XBA1F12NU14	FUSE	1	PC	R4,5	ERDS2FJ471	1/4W 470	2	
IC101	AN6675	IC,TURNTABLE DRIVE	1		R101	ERDS2FJ103	1/4W 10K	1	
IC201	AN6680	IC,CONTROL	1		R102	ERX1SJ4R7	1W 4.7	1	
IC301	AN6682	IC,PITCH CONTROL	1		R103	ERDS2FJ472	1/4W 4.7K	1	
IC302	TC4011BP	IC,P.CONT.ON/OFF SELECT	1		R104	ERDS2FJ473	1/4W 47K	1	
N1	XTN3+8JFZ	SCREW	5		R105	ERDS2FJ103	1/4W 10K	1	
N2	SFXGQ20-02	SCREW	3		R106	ERDS2FJ150	1/4W 15	1	
N3	XTW3+8T	SCREW	4		R107	ERX1ANJ1R5H	1W 1.5	1	
N4	XTB3+8J	SCREW	13		R108	ERDS2FJ103	1/4W 10K	1	
N5	SFXG172-01	SCREW	3		R109,10	ERX1SJ4R7	1W 4.7	2	
N8	SNSB10	SCREW	3		R201	ERG1SJ561	1W 560	1	
N9	XYN3+C6S	SCREW	2		R202	ERDS2FJ103	1/4W 10K	1	
N10	XTN3+6J	SCREW	4		R203	ERDS2FJ470	1/4W 47	1	
N11	XWE4D10BW	WASHER	1		R204	ERDS2FJ272	1/4W 2.7K	1	
N12	XTBS26+8J	SCREW	2		R205	ERDS2FJ124	1/4W 120K	1	
N13	XUC25FY	WASHER	2		R206	ERDS2FJ183	1/4W 18K	1	
N14	SFXW910J02	WASHER	1		R207	ERDS2FJ563	1/4W 56K	1	
N16	XTB3+10JFZ	SCREW	4		R208	ERDS2FJ224	1/4W 220K	1	
N17	XUC3FY	WASHER	2		R209	ERDS2FJ334	1/4W 330K	1	
N18	XTV3+8G	SCREW	1		R210	ERDS2FJ183	1/4W 18K	1	
N19	XSN17+3FY	SCREW	1		R211	ERDS2FJ472	1/4W 4.7K	1	
N20	SFXW122-03	WASHER	1		R212	ERDS2FJ151	1/4W 150	1	
N21	XUC2FT	WASHER	1		R213	ERDS2FJ122	1/4W 1.2K	1	
N22	XWE3D8	WASHER	1		R214	ERDS2FJ223	1/4W 22K	1	
N23	XYN3+C15S	SCREW	1		R215	ERDS2FJ472	1/4W 4.7K	1	
N24	RTW-12	WASHER	1		R216	ERDS2FJ154	1/4W 150K	1	
N25	XSN2+10	SCREW	2		R217	ERDS2FJ223	1/4W 22K	1	
N26	SFXG122-01	SCREW	4		R218	ERDS2FJ102	1/4W 1K	1	
N27	SFXG122-02	SCREW	11		R219	ERDS2FJ332	1/4W 3.3K	1	
N28	SNSB9-2	SCREW	6		R220	ERDS2FJ221	1/4W 220	1	
N29	XTW3+15T	SCREW	10		R221	ERDS2FJ471	1/4W 470	1	
N31	SFXG829-1	SCREW	1		R222	ERDS2FJ391	1/4W 390	1	
N32	XYN3+C10S	SCREW	2		R301	EROS2TKG2701	1/4W 2.7K	1	
N33	XTW3+6T	SCREW	3		R302	ERDS2FJ471	1/4W 470	1	
N34	XWE4A10BW	WASHER	1		R303	ERDS2FJ822	1/4W 8.2K	1	
N35	XTN3+25J	SCREW	1		R304	ERDS2FJ561	1/4W 560	1	
N36	XTB3+6JFZ	SCREW	2		R305	ERDS2FJ181	1/4W 180	1	
N37	XTW3+12TFZ	SCREW	2		R306	ERDS2FJ223	1/4W 22K	1	
N38	XTN3+8J	SCREW	1		R307	ERDS2FJ272	1/4W 2.7K	1	
N39	XTV23+10G	SCREW	1		△R401	ERDS1FJ152	1/2W 1.5K	1	
N40	XTN26+6J	SCREW	3		△R601	ERDS1FJ4R7	1/2W 4.7	1	
N41	XWE3F6	WASHER	2		S201,02	EVQPR04K	SW,SPEED SELECTOR 33/45	2	
N42	XUC5FY-V	WASHER	1		S203	SFDSS01GL13	SW,START/STOP	1	
N43	SFPEW17201	WASHER	1		S301	SFDZ122N11-3	SW,PITCH CONTROL RESET	1	(VR303)
N44	XTW26+6S	SCREW	1		S302	RSP2B010-1J	SW,PITCH RESET	1	
P1	RPG4326	PACKING CASE	1		S401	SFSD2MSL-C	SW,STYLUS ILLUMINATOR	1	
P2	SFHH122-011	CUSHION,FRONT	1		△S601	SFDSS5GL13P	SW,POWER	1	
P3	SFHH122-02	CUSHION,REAR	1		△T1	SLT66DT15C	POWER,TRANSFORMER	1	
P4	SFHD122N05	PAD,TOP	1		VR201	EVMK3GA00B54	VR,BRAKE ADJ.	1	
P5	SFHD122-02	PAD(A)	1		VR301	EVMH1GA00B23	VR,PITCH CONTROL,0% ADJ.	1	
P6	RPN0306	PAD(B)	1		VR302	EVMK3GA00B54	VR,PITCH CONTROL GAIN ADJ	1	
P7	RPH0133	PROTECTION SHEET	1		VR303	SFDZ122N11-3	VR,PITCH CONT.ADJ.	1	(S301)
P8	SFHZ122-01	PROTECTION SHEET	1		X201	RSXB4M13J01	X'TAL OSCILLATOR(4.13MHZ)	1	
P9	XZB60X65A01X	PROTECTION BAG	2						
P10	XZB45X50A01X	PROTECTION BAG	1						
P11	SFYF09A15	PROTECTION BAG	2						
P12	XZB05X06C03	PROTECTION BAG	2						
P14	XZB25X34C03X	POLYETHYLENE COVER	1						
P17	RPQ0608	PAD,TONEARM	1						
PL1	SFDN122-01E	LAMP	1						

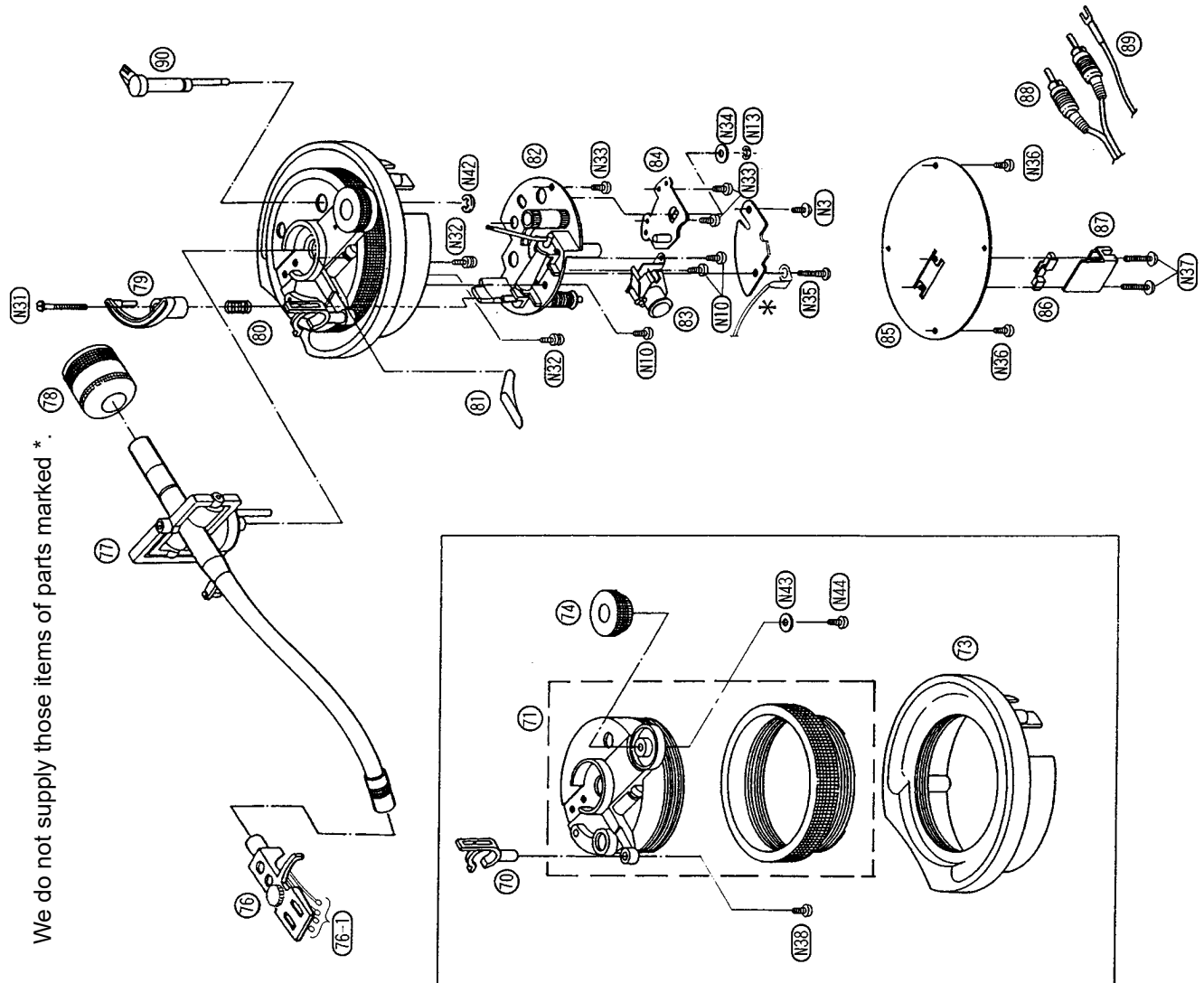
# ■ Cabinet Parts Location



Ref.No.	Part No.	Part Name & Description	Pcs	Ref.No.	Part No.	Part Name & Description	Pcs	Ref.No.	Part No.	Part Name & Description	Pcs
1	SFAD122-01A	DUST COVER	1	7	SFMZ172-01E	FG COIL ASS'Y	1	14	SFDJ122-06E	WIRE ASS'Y	1
2	RGS0008	T/T RUBBER MAT	1	8	SFMZQ20-01A	SHAFT ASS'Y	1	15	RGK0942Z-S	COVER,STROBE ILLUMINATOR	1
3	SFTE172-01Z	TURNTABLE ASS'Y	1	9	RFKN1200M3DP	POWER SW KNOB ASS'Y	1	16	SFQA122-01	SPRING	1
4	SFUM172-053	PANEL COVER	1	10	SFKT015-061	BUTTON,START/STOP	1	17	RMR1111A-K	BASE,OPERATION	1
5	SFMGQ20-01	DRIVE COIL COVER	1	11	SFKT015-011E	BUTTON,SPEED SELECTOR(33)	1	18	SFUM122-03	CAM,POWER SWITCH	1
6	SFMG520-31A	DRIVE COIL ASS'Y	1	12	SFKT015-021E	BUTTON,SPEED SELECTOR(45)	1	19	SFUM015-11	SPACER,LED	2
				13	SFDJ122-02E	WIRE ASS'Y	1	20	SFYB5-32	BALL	1

**● Tonearm section**

We do not supply those items of parts marked \*.

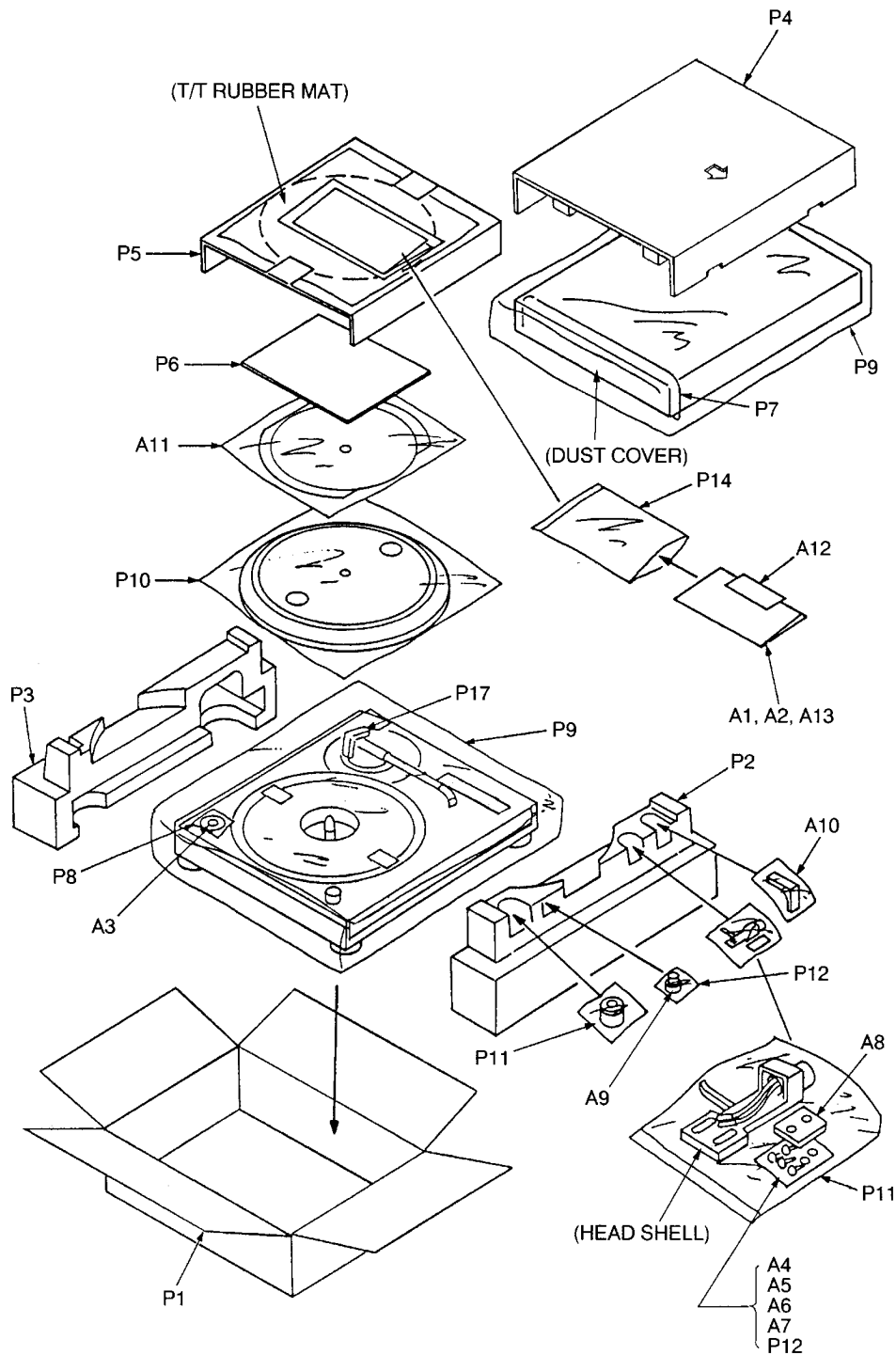


Ref.No.	Part No.	Part Name & Description	Pcs
21	SFQA520-01	SPRING	1
22	SFKK172-01	COVER,STYLUS ILLUMINATOR	1
23	SFXB122-06	DRIVE BOSS	1
24	SFQA172-01	SPRING	1
25	SFXJ172-01	PIN,LOCK CANCELER	1
26	SFQA520-011	SPRING	1
27	SFXO172-01-1	PIN,GUIDE	1
28	SFUP122-02E	BRACKET,ILLUMINATOR	1
30	SFUP122-03	PLATE,LOCK OPERATION	1
31	SFQA122-02	SPRING	1
32	SFXJ172-05	PIN	1
33	RMG0483-K	RUBBER,DUST COVER	2
35	SFUP122-09	HOLDER,LED	1
36	SFUP122-01	BRACKET,PITCH CONTROL	1
37	SFDJ122-04E	WIRE ASS'Y	1
38	SFUP122-15-1	STOPPER,SPRING	1
40	RKM0101D-S	CABINET	1
41	SFUM172-04	ORNAMENT,ILLUMINATOR	1
44	SFUP122M12E2	AC CORD ASS'Y	1
45	SFKT122-02	KNOB,PITCH CONTROL	1
46	RGH0131-S1	ORNAMENT,PITCH CONTROL	1
47	SFUZ122-01	FELT	1
51	SFGC122-01	RUBBER	3
53	SFAU122-032	BOTTOM COVER B	1
54	SFAU122-022	BOTTOM COVER A	1
55	RGN1655-K	NAME PLATE for U.S.A.	1
55	RGN1656-K	NAME PLATE for Canada.	1
57	SFUP122-233	SUPPORTER(A)	2
60	SFGC122-04E	INSULATOR	4
70	SFPRT17201K	ARM REST	1
71	RFKN1200MK2A	ARM BASE ASS'Y	1
73	SFPKD12201	BRACKET,ARM BASE	1
74	SFPAB17206	KNOB,ANTI-SKATING CONTROL	1
76	SFPC31005K	HEAD SHELL	1

Ref.No.	Part No.	Part Name & Description	Pcs
76-1	REZ1037-1	WIRE KIT	1
77	P-AM18201K	ONEARM ASS'Y	1
78	SFPWG17201K	BALANCE WEIGHT	1
79	SFPRT18201K	ARM LIFT	1
80	SFQA829-03	SPRING	1
81	SFPAB13202	KNOB,LIFT	1
82	SFPAB18201K	ONEARM FIXING PLATE	1
83	SFPJL18202K	OIL DAMPER	1
84	SFPZB12201K	PLATE	1
85	SFPZB12203	PLATE,ARM BASE COVER	1
86	SFUM170-06	SPACER,PHONO CORD	1
87	SFPZB12204	CLAMPER,PHONO CORD	1
88	RJL2P001B12	PHONO CORD	1
89	SFEL026-01E1	GROUND WIRE	1
90	SFPZB17202	KNOB,ARM LOCK	1
91	N092	SPACER	1
92	RGU0611-S	BUTTON,PITCH CONT.RESET	1
93	RMR0945-K	PLATE,PITCH CONTROL RESET	1
94	RMX0124	SPACER	1
96	SFGZ122-021	RUBBER	1
98	SFXW172-032	SPACER,PITCH CONTROL	1
99	REZ0836	FLAT CABLE	1
101	SFUZ122-04	SHEET	1
104	RMR1112-K	SHELL STAND	1
105	RQLC0142	TECHNICS LABEL	1
N1	XTN3+8JFZ	SCREW	5
N2	SFXGQ20-02	SCREW	3
N3	XTW3+8T	SCREW	4
N4	XTB3+8J	SCREW	13
N5	SFXG172-01	SCREW	3
N8	SNSB10	SCREW	3
N9	XYN3+C6S	SCREW	2
N10	XTN3+6J	SCREW	4

Ref.No.	Part No.	Part Name & Description	Pcs
N11	XWE4D10BW	WASHER	1
N12	XTBS26+8J	SCREW	2
N13	XUC25FY	WASHER	2
N14	SFXW910J02	WASHER	1
N16	XTB3+10JFZ	SCREW	4
N17	XUC3FY	WASHER	2
N18	XTV3+8G	SCREW	1
N19	XSN17+3FY	SCREW	1
N20	SFXW122-03	WASHER	1
N21	XUC2FT	WASHER	1
N22	XWE3D8	WASHER	1
N23	XYN3+C15S	SCREW	1
N24	RTW-12	WASHER	1
N25	XSN2+10	SCREW	2
N26	SFXG122-01	SCREW	4
N27	SFXG122-02	SCREW	11
N28	SNSB9-2	SCREW	6
N29	XTW3+15T	SCREW	10
N31	SFXG829-1	SCREW	1
N32	XYN3+C10S	SCREW	2
N33	XTW3+6T	SCREW	3
N34	XWE4A10BW	WASHER	1
N35	XTN3+25J	SCREW	1
N36	XTB3+6JFZ	SCREW	2
N37	XTW3+12TFZ	SCREW	2
N38	XTN3+8J	SCREW	1
N39	XTV23+10G	SCREW	1
N40	XTN26+6J	SCREW	3
N41	XWE3F6	WASHER	2
N42	XUC5FY-V	WASHER	1
N43	SFPEW17201	WASHER	1
N44	XTW26+6S	SCREW	1

■ Packaging



Ref.No.	Part No.	Part Name & Description	Pcs
A1	RQT4912-P	O/I BOOK	1
A1	RQT4913-C	O/I BOOK	1
A2	RQA0149	WARRANTY CARD	1
A2	SQX7183	WARRANTY CARD	1
A3	SFWE010	EP record ADAPTOR	1
A4	RHN26003	NUT,CARTRIDGE	2
A5	SFCZV8801	SCREW,CARTRIDGE	2
A6	SFPEV9801	SCREW,CARTRIDGE	2
A7	SFPEW9601	WASHER	2
A8	SFPZB3501	SHELL WEIGHT	1
A9	SFPWG17202	AUXILIARY WEIGHT	1
A10	SFK0135-01	OVERHANG GAUGE	1
A11	RGS0005Z	DISC SLIP SHEET ASSY	1
A12	RQLC0142	TECHNICS LABEL	1
A13	RQCB0391	SERVICENTER LIST	1
A13	RQCB0832	SERVICENTER LIST	1

Ref.No.	Part No.	Part Name & Description	Pcs
P1	RPG4326	PACKING CASE	1
P2	SFHH122-011	CUSHION,FRONT	1
P3	SFHH122-02	CUSHION,REAR	1
P4	SFHD122N05	PAD,TOP	1
P5	SFHD122-02	PAD(A)	1
P6	RPN0306	PAD(B)	1
P7	RPH0133	PROTECTION SHEET	1
P8	SFHZ122-01	PROTECTION SHEET	1
P9	XZB60X65A01X	PROTECTION BAG	2
P10	XZB45X50A01X	PROTECTION BAG	1
P11	SFYF09A15	PROTECTION BAG	2
P12	XZB05X06C03	PROTECTION BAG	2
P14	XZB25X34C03X	POLYETHYLENE COVER	1
P17	RPQ0608	PAD,TONEARM	1