

1200S.com

Visit us for all your Technics 1200 / 1210 needs...

Keeping the legend alive!

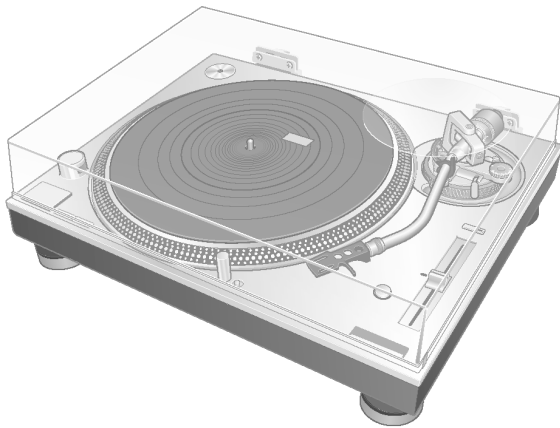
1-833-SL1200S (751-2007)

Service Manual

Direct Drive Turntable System

Model No. **SL-1210GEG**
SL-1210GPP

Color
 (K).....Black Type



Please use this manual together with Service Manual and Parts Change Notice for
 Model No. SL-1200GEG/SL-1200GPP-S, Order No. AD1609014CE
 Model No. SL-1200GEG/SL-1200GPP-S, Order No. AD1911709PE
 Model No. SL-1200GEG/SL-1200GPP-S, Order No. AD2003501SE
 Model No. SL-1200GEG/SL-1200GPP-S, Order No. AD2007502SE
 Model No. SL-1200GEG/SL-1200GPP-S, Order No. AD2102501SE
 Model No. SL-1200GEG/SL-1200GPP-S, Order No. AD2105506SE

WARNING

This service information is designed for experienced repair technicians only and is not designed for use by the general public. It does not contain warnings or cautions to advise non-technical individuals of potential dangers in attempting to service a product. Products powered by electricity should be serviced or repaired only by experienced professional technicians. Any attempt to service or repair the product or products dealt with in this service information by anyone else could result in serious injury or death.

Table of Contents

	Page		Page
1. Changes in Replacement Parts List.....	2	2.2. Distinction of products.....	3
2. Addition of Chassis Cover Unit Ass'y.....	3	2.3. Interchangeability of parts for the products.....	3
2.1. Description.....	3	2.4. Parts List.....	4

Technics®


© Panasonic Corporation 2021 Unauthorized copying and distribution is a violation of law.

1 Changes in Replacement Parts List



Notes:

This Simplified Service Manual is issued for an additonal product name and color change to SL-1210GEG/SL-1210GPP-K (Black Type). The following sections are the updates to the original Service Manual:

*Important safety notice:

Components identified by  mark have special characteristics important for safety.

When replacing any of components, be sure to use only manufacturer's specified parts shown in the parts list.

Safety	Ref No.	Original Part No. (SL-1200GEG/PP-S)	New Part No. (SL-1210GEG/PP-K)	Part Name & Descriptions	Qty	Remarks
	8	RGW0467-S	RGW0467-K	PITCH KNOB	1	
	12	TZTGG01AJ1E	TZTGG01BQ1E	TOP AP PANEL UNIT ASS'Y	1	
	18	TTFA0575	TTFA0604	OPERATION UNIT	1	
	21	TYL0544	TYL0624	TONE ARM UNIT	1	
	21-1	RMH0241	RMH0241-K1	QUEUING KNOB	1	
	22	RYQ1615-S	TYL0438	RANGE BUTTON UNIT	1	
	42	RGU3007-S	RGU3007-K	RESET BUTTON	1	
	48	TZTYQ02AJ1E	TZTTV01BQ1E	STYLUS LIGHT UNIT ASS'Y	1	
	P18	TPCE72501	TPCE79201	PACKING CASE	1	
	A4	TQBM7007-1	TQBM7007-2	SETUP LEAFLET	1	SL-1210GEG-K
	A4	TQBM7008-1	TQBM7008-2	SETUP LEAFLET	1	SL-1210GPP-K
	A7	TBMX5422	TBMX5421	EP ADAPTER	1	
	A8	TQBM0004-1	TQBM0004-2	OI	1	SL-1210GEG-K
	A8	TQBM0005-1	TQBM0005-2	OI	1	SL-1210GPP-K
	A14	TYL0541	TYL0295	BALANCE WEIGHT UNIT	1	

2 Addition of Chassis Cover Unit Ass'y

2.1 Description

Parts have been added to improve quality.

Please perform an appropriate service with the following contents.

2.2 Distinction of products

Add new part (Chassis Cover to Inner Chassis) for below model:

Model No.
SL-1210GEG/SL-1210PP-K

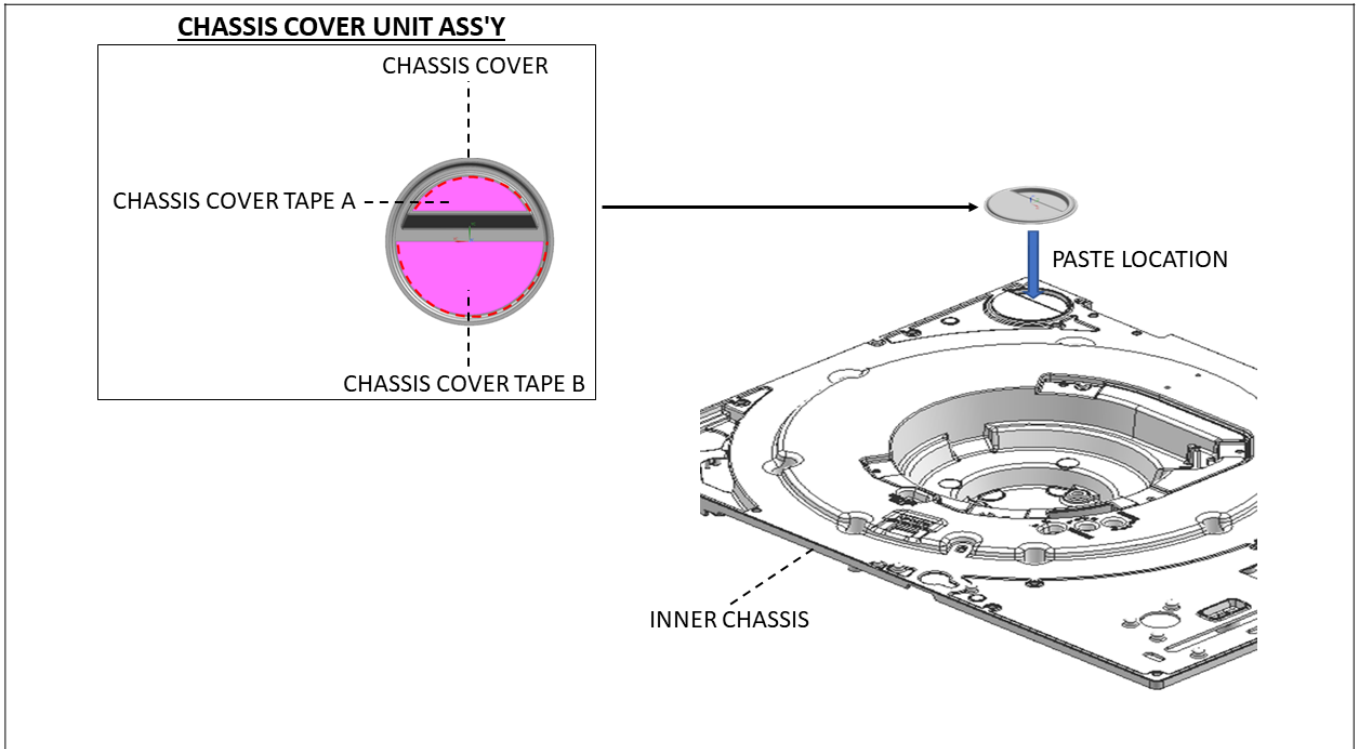
2.3 Interchangeability of parts for the products

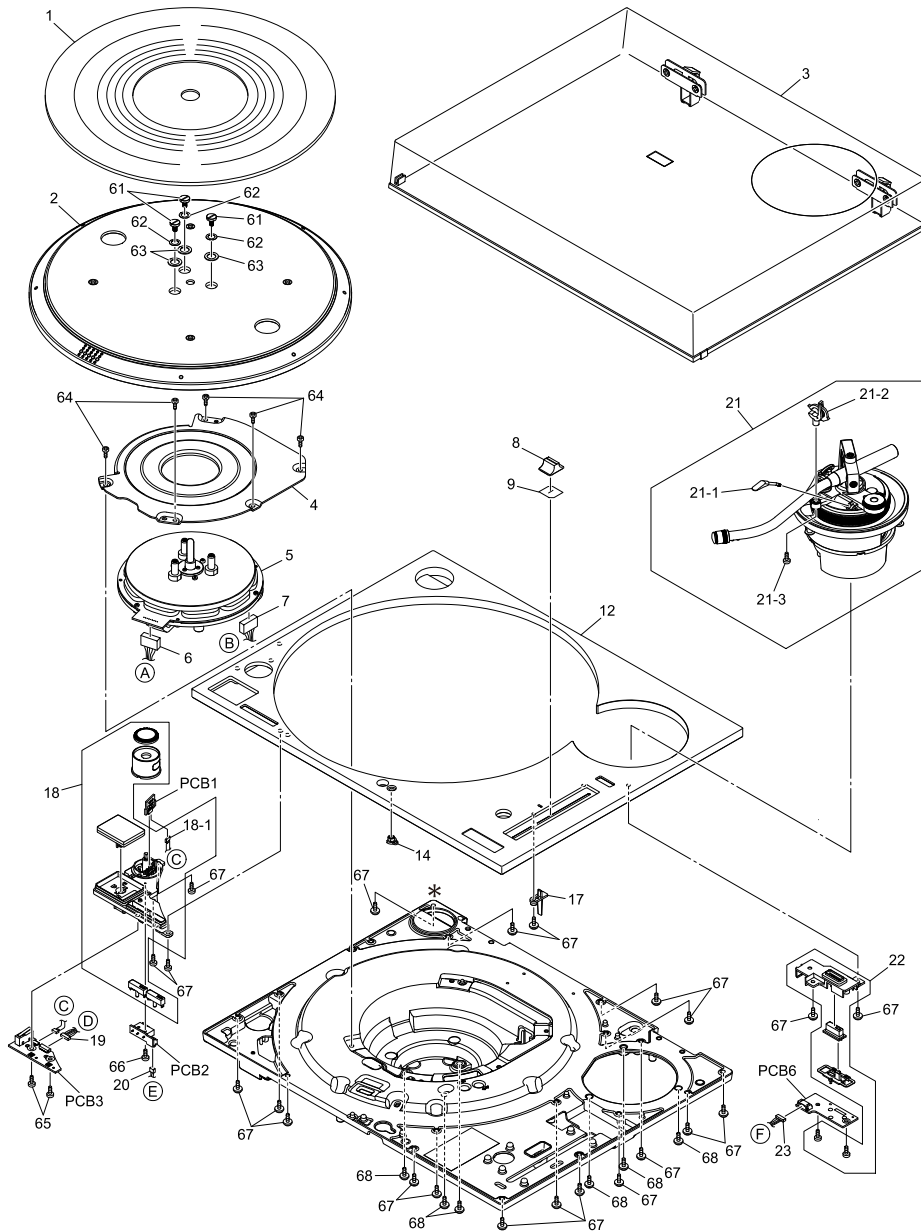
Reason for Change	
*The circled item indicates the reason. If no marking, see the Notes in the bottom column.	
1. Improve performance	
2. Change of material or dimension	
3. To meet approved specification	
4. Standardization	
⑤ Addition	
6. Deletion	
7. Correction	
8. Other	

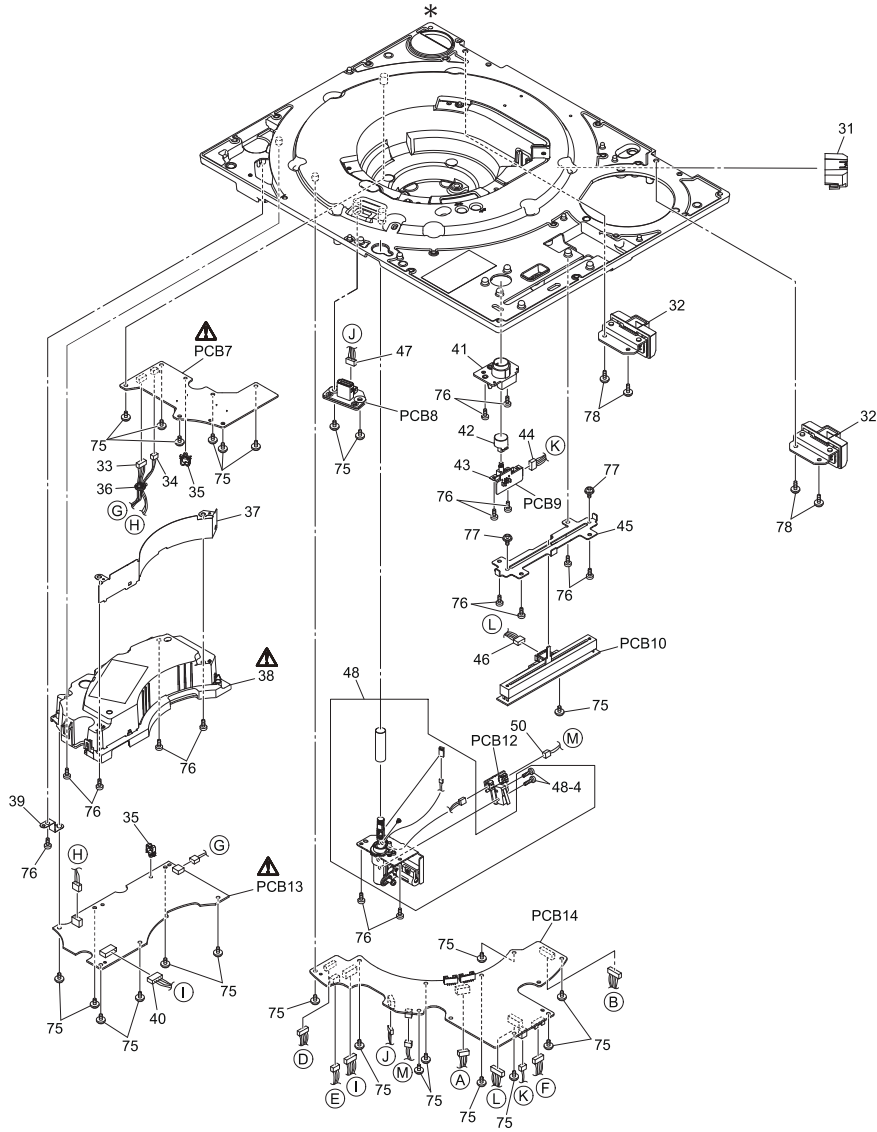
Interchangeability Code		
**The circled item indicates the interchangeability. If no marking, see the Notes in the bottom column.		
	Parts	Set Production
A	Original → Early New → Late	Original or new parts may be used in early or late production set. Use original parts until exhausted, then stock new parts.
B	Original → Early New → Late	Original parts may be used in early production set only. New parts may be used in early or late production set. Use original parts where possible, then stock new parts.
C	Original → Early New → Late	New parts only may be used in early or late production set. Stock new parts.
Ⓓ	Original → Early New → Late	Original parts may be used in early production set only. New parts may be used in late production set only. Stock both original and new parts.
E	Other	

2.4 Parts List

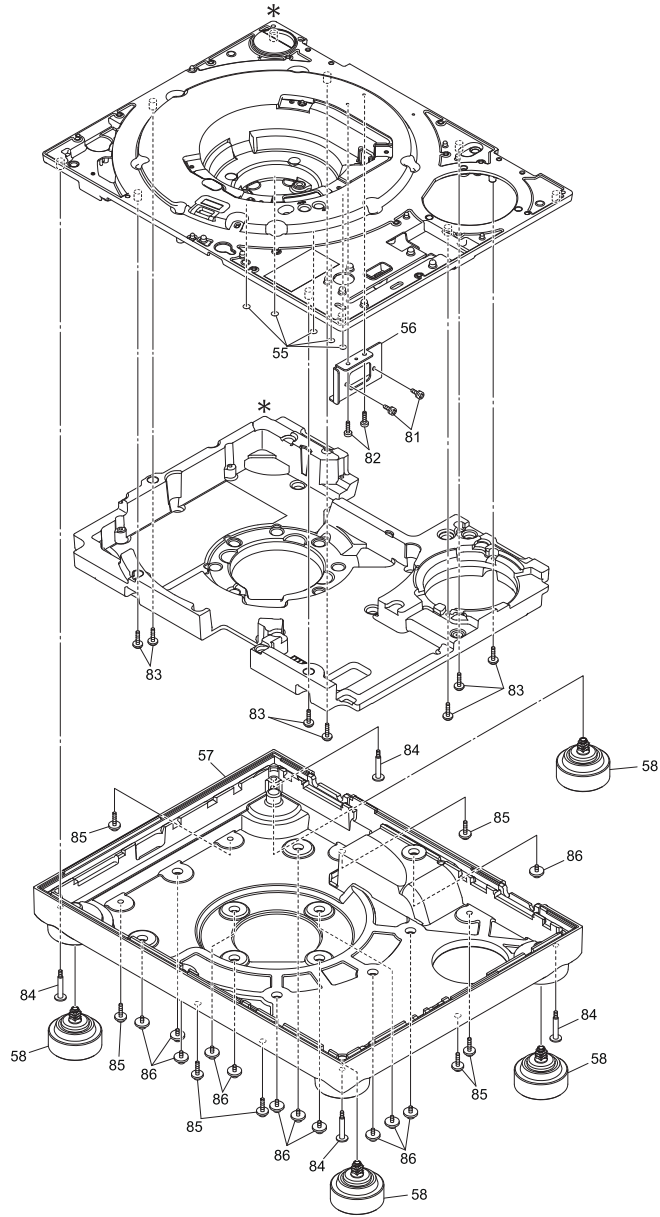
Parts Number						
Model No.	Ref No.	Original Part No.	New Part No.	Q'ty	New Part Name & Descriptions	Remarks
See above	88	NIL	TZTYL01BQ1E	1	CHASSIS COVER UNIT ASS'Y	ADD



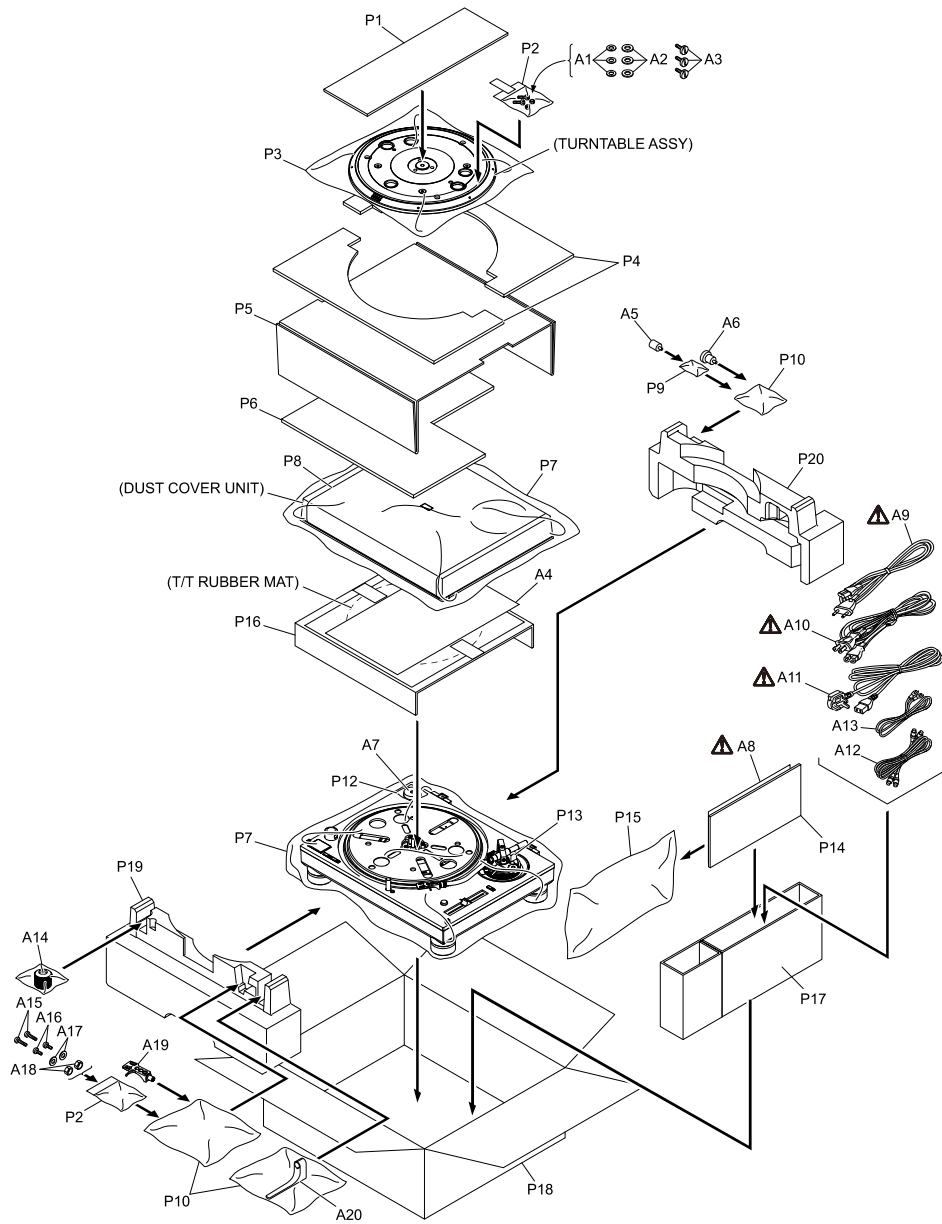




NOTE : "*" PARTS IS NOT SUPPLIED / REF IS FOR INDICATION ONLY



NOTE : "*" PARTS IS NOT SUPPLIED / REF IS FOR INDICATION ONLY



Model No. : SL-1200GEG /SL-1200GPP Parts List

Change	Safety	Ref. No.	Part No.	Part Name & Description	Q'ty	Remarks
		PCB1	REP5330AC	STROBE PCB	1	E.S.D.
		PCB2	REP5330AF	SW PCB	1	E.S.D.
		PCB3	REP5330AA	PANEL PCB	1	E.S.D.
		PCB6	REP5330AG	RANGE PCB	1	E.S.D.
	▲	PCB7	REP5328AA	AC-IN PCB	1	E.S.D.
		PCB8	REP5330AJ	USB CN PCB	1	E.S.D.
		PCB9	REP5330AE	RESET PCB	1	E.S.D.
		PCB10	REP5330AB	PITCH PCB	1	E.S.D.
		PCB12	REP5330AD	STYLUS_SW PCB	1	E.S.D.
	▲	PCB13	REP5328AB	SMP5 PCB	1	E.S.D.
		PCB14	REP5329A	MAIN PCB	1	E.S.D.
		1	RG50008	T/T RUBBER MAT	1	
		2	RYQ1618-X	TURNTABLE ASSY	1	
		3	RYF1035-Q1	DUST COVER UNIT	1	
		4	RG0286-S1	MOTOR SHIELD PLATE	1	
		5	TYL0006	DC MOTOR UNIT	1	
		6	REX1939	4P WIRE UNIT (ENCODER TO MAIN)	1	
		7	REX1941	9P WIRE UNIT (MOTOR TO MAIN)	1	
		8	RGW0467-S	PITCH KNOB	1	
		9	RMQ2526	PITCH KNOB SPACER	1	
		12	TYL0040	TOP AL PANEL UNIT	1	
		14	RMQ2533	TYLUS SHAFT GUIDE	1	
		17	RL0836-Q	PITCH LED LIGHT GUIDE	1	
		18	RYQ1610-S	OPERATION UNIT	1	
		18-1	REX1948	5P WIRE UNIT (STROBE TO PANEL)	1	
		19	REX1942	11P WIRE UNIT (PANEL TO MAIN)	1	
		20	REX1944	2P WIRE UNIT (SW TO MAIN)	1	
		21	RAC0007	TOPE ARM UNIT	1	
		21-1	RMH0241	QUEUING KNOB	1	
		21-2	RYQ1630-K	ARMREST ASSY	1	
		21-3	XTB3+8JFJK	SCREW	1	
		22	RYQ1615-S	RANGE BUTTON UNIT	1	
		23	REX1945	5P WIRE UNIT (RANGE BUTTON TO MAIN)	1	
		61	RHD40060	TURNTABLE FIXATION SCREW	3	
		62	RGQ0907-S	M4 WASHER	3	
		63	RGQ0908-S	DISK SPRING	3	
		64	XTB3+8JFJ	SCREW	5	
		65	XTB3+8JFJK	SCREW	2	
		66	XTN2+10JFJ	SCREW	1	
		67	XYN3+F10FJK	SCREW	22	
		68	RHD30248	SCREW	6	
		31	RMQ2532	MOTOR CONN HOLDER	1	
		32	RYQ1617-K	HINGE PLATE UNIT	2	
		33	TXJ/P1AD1E	2P WIRE UNIT B (AC-INLET TO SMP S)	1	
		34	REX1938	2P WIRE UNIT A (AC-INLET TO SMP S)	1	
		35	TMME268	CLAMPER	2	
		36	RMQ2405	VINYL TIE	1	
		37	RMQ2534	SMP5 SHIELD	1	
	▲	38	TYL0015	SMP5 HOLDER UNIT	1	
		39	RMQ2535	SMP5 EARTH PLATE	1	
		40	REX1947	7P WIRE UNIT (SMP5 TO MAIN)	1	
		41	RGQ0892-K	RESET BUTTON ORNAMENT	1	
		42	RGU3007-S	RESET BUTTON	1	
		43	RMN1135	RESET SW HOLDER	1	
		44	REX1946	3P WIRE UNIT (RESET BUTTON TO MAIN)	1	
		45	RMN1134	SLIDE SW PLATE	1	
		46	REX1943	6P WIRE UNIT (PITCH CONTROL TO MAIN)	1	

Model No. : SL-1200GEG /SL-1200GPP Parts List

Change	Safety	Ref. No.	Part No.	Part Name & Description	Q'ty	Remarks
		47	REX1950	4P WIRE UNIT (USB TO MAIN)	1	
		48	TYL0016	STYLUS LIGHT UNIT (WITH LED PCB)	1	
		48-4	XSN2+10FJ	SCREW	2	
		50	REX1940	2P WIRE UNIT (MAIN TO STYLUS SW)	1	
		75	RHD30111-31	SCREW	24	
		76	XTB3+8JFJK	SCREW	15	
		77	RHD30225	SCREW	2	
		78	XYN3+F10FJK	SCREW	4	
		55	RMQ2573	SCREW COVER	5	
		56	RG60285-K	AC HOLDER PLATE	1	
		57	RGP1749-K	BOTTOM COVER	1	EG
		57	RGP1749A-K	BOTTOM COVER	1	PP
		58	RKA0352-K	INSULATOR UNIT	4	
		81	XYN3+C8FJK	SCREW	2	
		82	XTB3+8JFJK	SCREW	2	
		83	RHD30250	SCREW	7	
		84	RHD30247	SCREW	4	
		85	RHD40059	SCREW	7	
		86	RHD30245	SCREW	12	
		A1	RGQ0908-S	DISK SPRING	3	
		A2	RGQ0907-S	M4 WASHER	3	
		A3	RHD40060	TURNTABLE FIXATION SCREW	3	
		A4	TQBM7007	SETUP LEAFLET	1	EG
		A4	TQBM7008	SETUP LEAFLET	1	PP
		A5	TPAKK61	SUB WEIGHTA	1	
		A6	TPAKK62	SUB WEIGHTB	1	
		A7	RMX0551	EP ADAPTER	1	
	⚠	A8	TQBM0004	OI (GERMAN)	1	EG
	⚠	A8	TQBM0005	OI (ENGLISH/CANADIAN FRENCH)	1	PP
	⚠	A9	K2CS3YY00033	PLUGS WITH CABLE AC POWER SOURCE	1	EG
	⚠	A10	K2CM3YY00041	PLUGS WITH CABLE AC POWER SOURCE	1	EG
	⚠	A10	K2CG3YY00191	PLUGS WITH CABLE AC POWER SOURCE	1	PP
	⚠	A11	K2CT3YY00081	PLUGS WITH CABLE AC POWER SOURCE	1	EG
		A12	K2KYYYY00257	PHONO CABLE	1	
		A13	K4EY1YY00160	EARTH CABLE	1	
		A14	RXQ2316-1	BALANCE WEIGHT UNIT	1	
		A15	RHD26080	CARTRIDGE SCREW 14.5	2	
		A16	RHD26079	CARTRIDGE SCREW 6.5	2	
		A17	RHW26013	CARTRIDGE WASHER	2	
		A18	RHN26006	CARTRIDGE NUT	2	
		A19	RFA3670	SHELL UNIT	1	
		A20	RMR2210-W	OVERHANG GAUGE	1	
		P1	SPQ0067	TOP PAD	1	
		P2	VPF1016	POLY BAG	2	
		P3	SPF0031	PROTECT BAG	1	
		P4	SPN0518	TT CUSHION	2	
		P5	SPQ0049	TOP COVER PAD	1	
		P6	SPN0476	TOP COVER CUSHION	1	
		P7	SPF0070	PE BAG	2	
		P8	SPH0024	PROTECTION SHEET	1	
		P9	SPF0067	PE BAG	1	
		P10	SPF0068	PE BAG	3	
		P12	SPH0023	PROTECTION SHEET	1	
		P13	RPQ0608	TONENARM PAD	1	
		P14	RPQ2632	PAD	1	
		P15	RPF0687	PE BAG C	1	

Model No. : SL-1200GEG /SL-1200GPP Parts List

Change	Safety	Ref. No.	Part No.	Part Name & Description	Q'ty	Remarks
		P16	SPQ0050	TT HOLD PAD A	1	
		P17	SPQ0057	ACCESSORIES PAD	1	
		P18	SPG0830	PACKING CASE	1	EG
		P18	SPG0832	PACKING CASE	1	PP
		P19	SPN0469A-1	CUSHION FRONT	1	
		P20	SPN0469B-1	CUSHION REAR	1	