

1200S.com

Visit us for all your Technics 1200 / 1210 needs...

Keeping the legend alive!

1-833-SL1200S (751-2007)

Service Manual

Turntable System

- SL-1210M5GE
SL-1210M5GEB
SL-1210M5GGN
SL-1210M5GPP

Colour

Black Type: SL-1210M5G



Specifications

TURNTABLE SECTION

Type:	Quartz direct drive Manual turntable
Drive method:	Direct drive
Motor:	Brushless DC motor
Turntable platter:	Aluminum diecast Diameter 33.2cm (13-5/64") Mass 1.7kg (3.74lb.)
Turntable speeds:	33-1/3 r/min, 45 r/min
Variable range pitch:	±8%, ±16% (two settings)
Starting torque:	1.5kg-cm (1.3lb-in)
Build-up characteristics:	0.7s. from standstill to 33-1/3 r/min
Braking system:	Electronic brake
Wow and flutter:	0.01% WRMS* 0.025% WRMS (JIS C5521) ±0.035% peak (IEC 98A Weighted)
Rumble:	-56dB (IEC 98A Unweighted) -78dB (IEC 98A Weighted)

*This rating refers to turntable assembly alone, excluding effects of record, cartridge or tonearm, but including platter. Measured by obtaining signal from built-in frequency generator of motor assembly.

TONEARM SECTION

Type:	Universal
Effective length:	230mm (9-1/16")
Arm height adjustment range:	0-6 mm
Overhang:	15mm (19/32")
Effective mass:	12g (without cartridge)
Offset angle:	22°

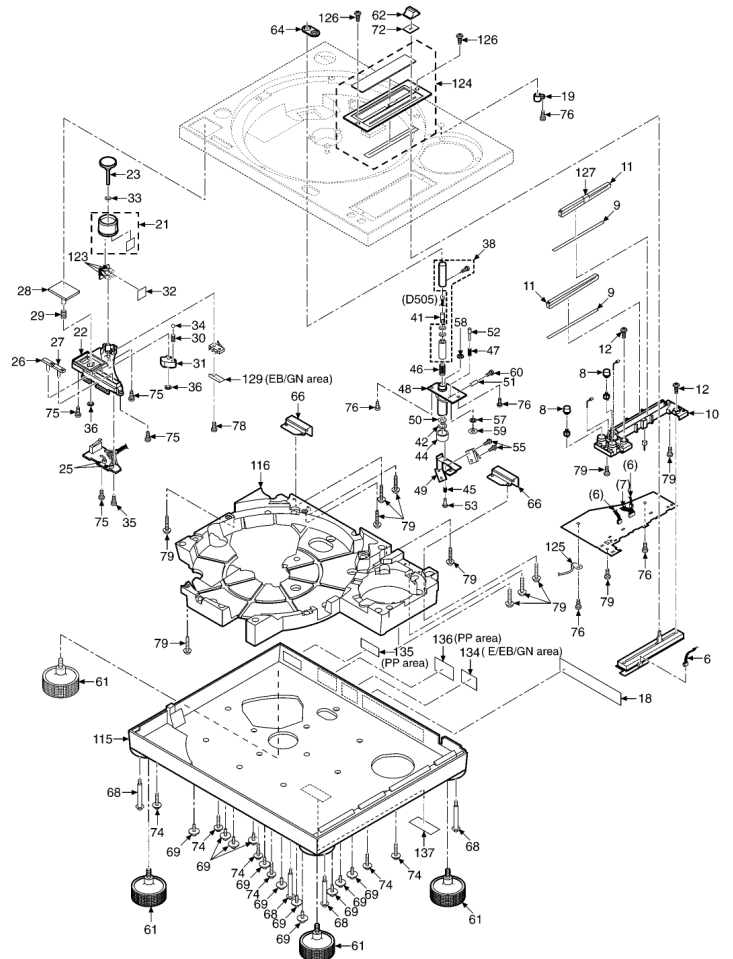
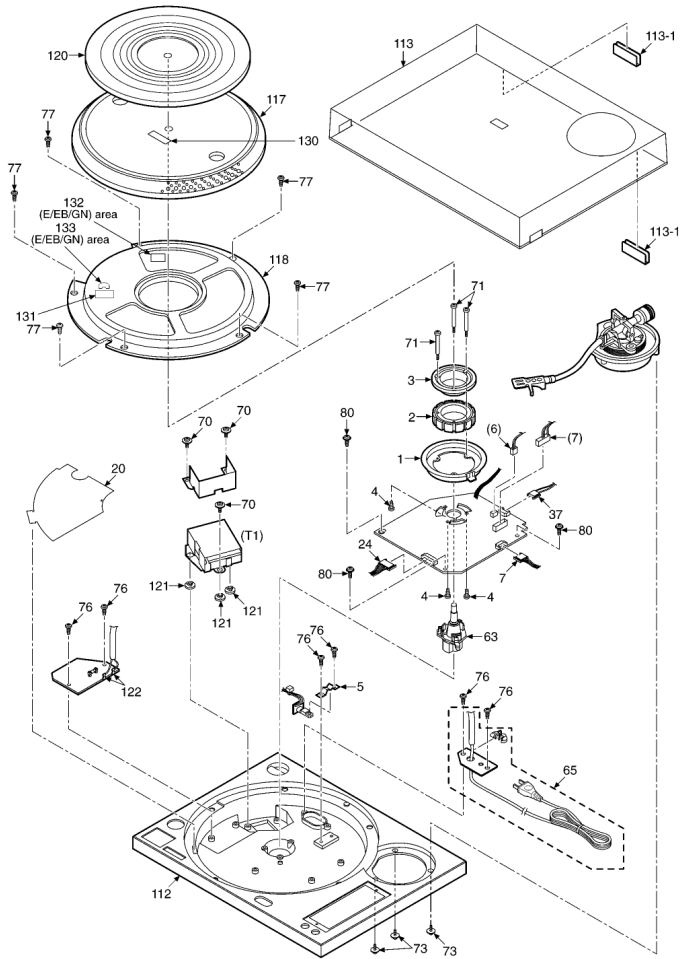
Friction:	Less than 7 mg (lateral, vertical)
Tracking error angle:	Within 2°32' [at the outer groove of 30cm (12") record] Within 0°32' [at the inner groove of 30cm (12") record]
Stylus pressure adjustment range:	0-4g
Applicable cartridge weight range:	3.5-13g
(with auxiliary weight);	11-20.5g (including headshell) 9.5-13g
(with shell weight);	17-20.5g (including headshell) 3.5-6.5g
Headshell weight:	11-14g (including headshell) 7.5g

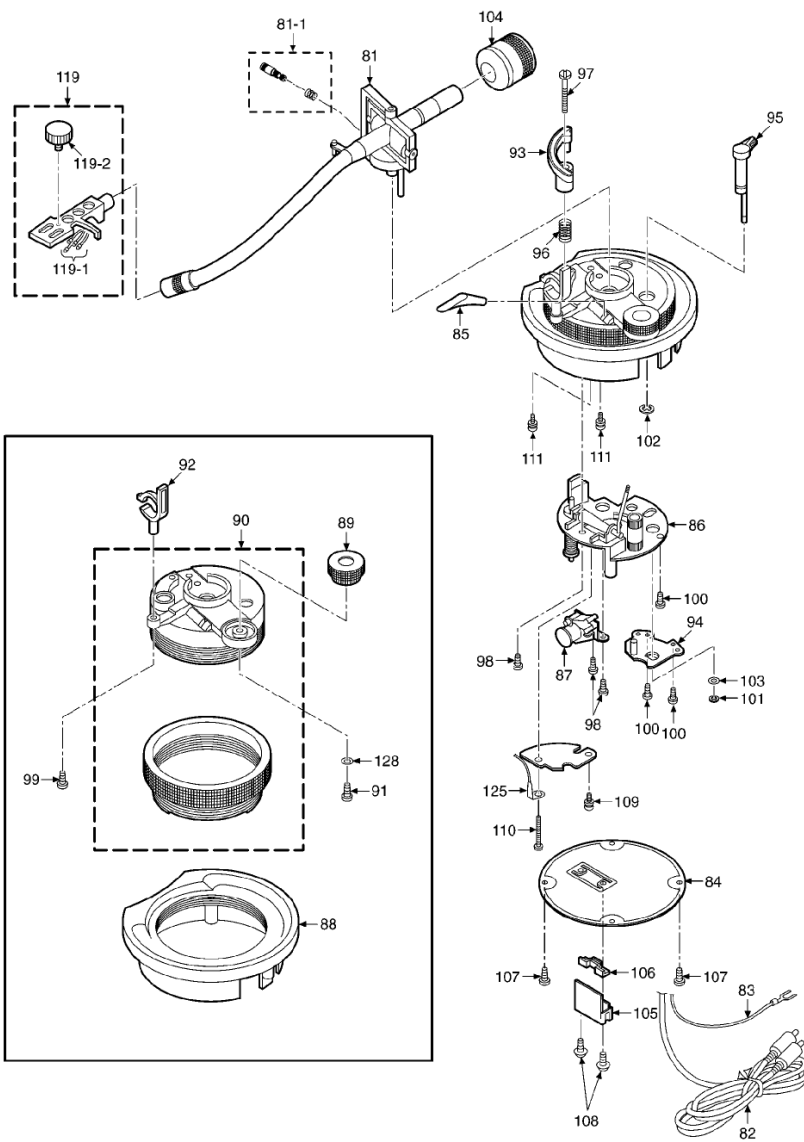
GENERAL

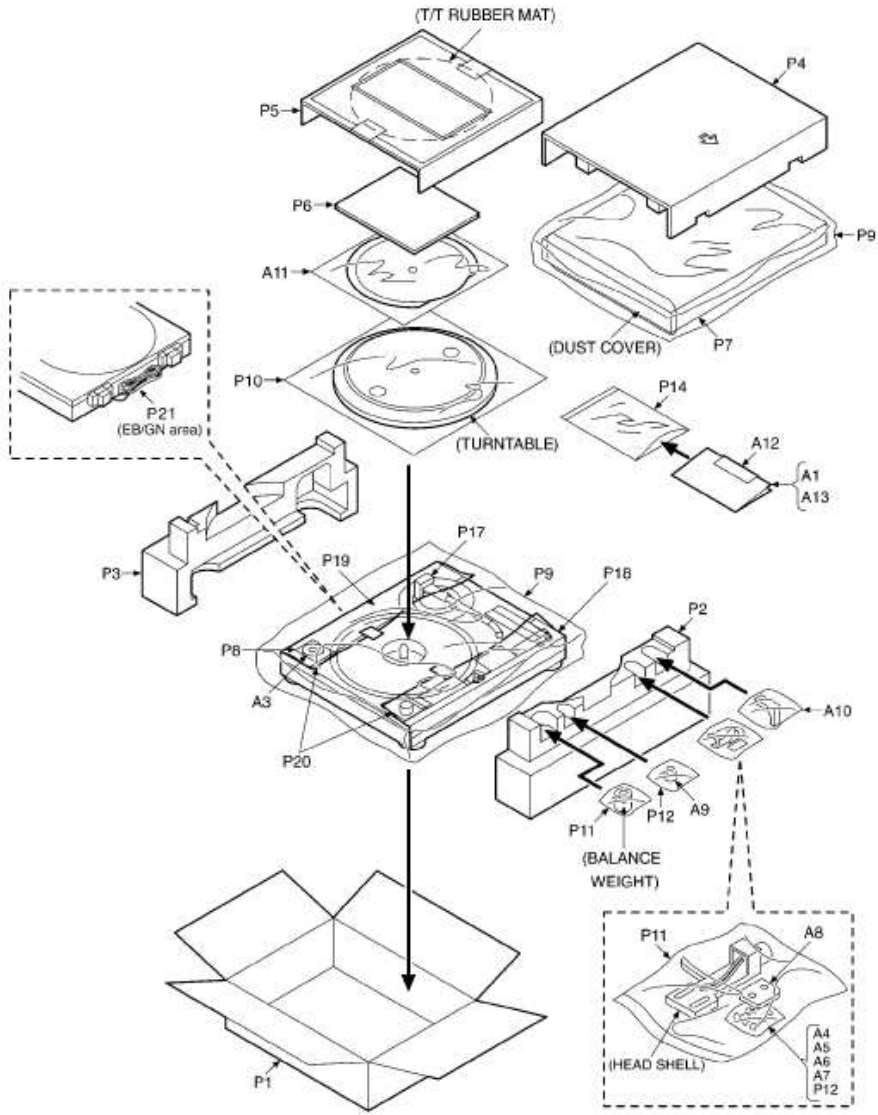
Power supply:	AC110-127V/220-240V, 50Hz (E,EB,GN) AC120V, 60Hz (PP)
Power consumption:	15W (E,EB,GN) 14.5W (PP)
Dimensions (W×H×D):	45.3×17.2×35.5cm (17-27/32"×6-25/32"×13-31/32")
Mass:	11.7kg (25.74lb)

Note:
Specifications are subject to change without notice.
Mass and dimensions are approximate.

© 2003 Matsushita Electric Industrial Co., Ltd. All rights reserved. Unauthorized copying and distribution is a violation of law.







- The parenthesized indications in the Remarks columns specify the areas. Parts without these indications can be used for all areas.
 - (E): SL-1210M5GE
 - (EB): SL-1210M5GEB
 - (GN): SL-1210M5GGN
 - (PP): SL-1210M5GPP
- Capacity values are in microfarads (uF) unless specified otherwise, P=Pico-farads (pF) F=Farads (F)
- Resistance values are in ohms, unless specified otherwise, 1K=1,000 (OHM), 1M=1,000k (OHM)
- The marking <RTL> indicates the retention time is limited for this item. After the discontinuation of this assembly in production, it will no longer be available.

Ref. No.	Part No.	Part Name & Description	Pcs	Remarks
1	SFMZ172-01E	FC COIL ASS'Y	1	
2	SFMG520-31A	DRIVE COIL ASS'Y	1	
3	SFMGQ20-01	DRIVE COIL COVER	1	
4	XTN26+6J	SCREW	3	
5	N092	SPACER	1	
6	REZ1507	WIRE KIT	1	
7	REZ1547	WIRE KIT	1	
8	RGU2168-S1	KNOB,RESET	2	
9	RMQ1194	SHEET	2	
10	RMR1501-K	BASE	1	
11	RMR1502-Q	LED PLATE	2	
12	XYN3+F8	SCREW	2	
18	RGN2481-K	NAME PLATE	1	(E)
18	RGN2482-K	NAME PLATE	1	(EB)
18	RGN2483-K	NAME PLATE	1	(GN)
18	RGN2484-K	NAME PLATE	1	(PP)
19	RMR1112-K	SHELL STAND	1	
20	RMZ0584-1	BARRIER	1	(E,EB,GN)
21	RGK0942AZ-S	COVER,STROBE ILLUMINATOR	1	
22	RMR1111B-K	BASE,OPERATION	1	
23	RYQ0309-K	KNOB,POWER	1	
24	REZ1544	WIRE KIT	1	
25	SFUM015-11	LED SPACER	2	
26	SFKT015-013E	BUTTON,SPEED SELECT(33)	1	
27	SFKT015-023E	BUTTON,SPEED SELECT(45)	1	
28	SFKT015-063A	BUTTON,START/STOP	1	
29	SFQA122-011	SPRING	1	
30	SFQA520-01	SPRING	1	
31	SFUM122-03	CUM	1	
32	SFUZ122-04	SHEET	1	

33	SFXW910J02	WASHER	1	
34	SFYB5-32	STEEL BALL	1	
35	XTV3+8G	SCREW	1	
36	XUC3FY	WASHER	2	
37	REZ1548	WIRE KIT	1	
38	RGK1603Z-S	LAMP CASE ASS'Y	1	
41	RMX0243	LED SPASER	1	
42	RTW-12	WASHER	1	
44	SFGZ122-021	RUBBER	1	
45	SFQA122-02	SPRING	1	
46	SFQA172-01	SPRING	1	
47	SFQA520-011	SPRING	1	
48	SFUP122-02E	BRACKET,ILLUMINATOR	1	
49	SFUP122-03	PLATE,LOCK OPERATION	1	
50	SFUP122-15-1	STOPPER,SPRING	1	
51	SFX0172-01-1	PIN,GUIDE	1	
52	SFXJ172-011	PIN,LOCK CANCELLER	1	
53	SFXJ172-05	PIN	1	
55	XSN2+10	SCREW	2	
57	XUC25FY	WASHER	1	
58	XUC2FY	WASHER	1	
59	XWE3D8	WASHER	1	
60	XYN3+C15S	WASHER	1	
61	SFGC122-04E	INSULATOR	4	
62	SFKT122-022A	KNOB,PITCH CONTROL	1	
63	SFMZQ20-09A	SHAFT	1	
64	SFUM172-043A	ORNAMENT,ILLUMINATOR	1	
65	SFUP122N11E	AC CORD ASS'Y	1	(E)
65	SFUP122G11E	AC CORD ASS'Y	1	(EB)
65	SFUP122L11E	AC CORD ASS'Y	1	(GN)
65	SFUP122M12E2	AC CORD ASS'Y	1	(PP)
66	SFUP122-23C	HINJI-PLATE-A	2	
68	SFXG122-01	SCREW	4	
69	SFXG122-02	SCREW	11	
70	SFXG172-01	SCREW	3	
71	SFXGQ20-021	SCREW	3	
72	SFXW172-032	SPACER	1	
73	SNSB10	SCREW	3	
74	SNSB9-2	SCREW	6	
75	XTB3+10JFZ	SCREW	4	
76	XTB3+8J	SCREW	11	
77	XTN3+8JFZ	SCREW	5	

78	XTV23+10G	SCREW	1	
79	XTW3+15T	SCREW	12	
80	XTW3+8T	SCREW	3	
81	RYQ0154B-S	ARM ASS'Y	1	
81-1	RGZ0053Z-S	ADJUST KNOB	1	
82	RJL4P002S12	PHONO CORD	1	
83	SFEL026-01E2	GROUND WIRE	1	
84	SFPZB12203-1	PLATE,ARM BASE COVER	1	
85	SFPAB13202	KNOB,LIFT	1	
86	SFPAB18201K1	TONEARM FIXING PLATE	1	
87	SFPJL18202K	OIL DAMPER	1	
88	SFPKD12201-1	BRACKET,ARM BASE	1	
89	SFPAB17206A	KNOB,ANTI-SKATING CONTROL	1	
90	RFKN1200M5GB	ARM BASE ASS'Y	1	
91	XTW26+6S	SCREW	1	
92	SFPRT17201K1	ARMREST ASS'Y	1	
93	SFPRT18201K	ARM LIFT	1	
94	SFPZB12201K	PLATE	1	
95	SFPZB17202A	KNOB,ARM LOCK	1	
96	SFQA829-03	SCREW	1	
97	SFXG829-1	SCREW	1	
98	XTN3+6J	SCREW	3	
99	XTN3+8J	SCREW	1	
100	XTW3+6T	SCREW	3	
101	XUC25FY	WASHER	1	
102	XUC5FY-V	WASHER	1	
103	XWE4A10BW	WASHER	1	
104	SFPWG17201BK	BALANCE WEIGHT	1	
105	SFPZB12204	CLAMPER,PHONO CORD	1	
106	SFUM170-061	SPACER,PHONO CORD	1	
107	XTB3+6JFZ	SCREW	2	
108	XTW3+12TFZ	SCREW	2	
109	XTW3+8T	SCREW	1	
110	XYE3+CJ25	SCREW	1	
111	XYN3+C8FZS	SCREW	2	
112	RKM0101K-K	CABINET	1	
113	RYF0370A-X	DUST COVER ASSY	1	
113-1	RMG0483-K	DUST COVER RUBBER	2	
115	SFAU122-025	BOTTOM COVER A	1	(E)
115	SFAU122P025	BOTTOM COVER A	1	(PP)
116	SFAU122-034	BOTTOM COVER B	1	
117	SFTE172-01Z1	TURNTABLE ASS'Y	1	
118	SFUM172-055	PANEL COVER	1	(E,EB)
118	SFUM172-054	PANEL COVER	1	(PP,GN)
119	SFPCC31006K	SHELL ASS'Y(S)	1	
119-1	REZ1037-2	SHELL WIRE	1	
119-2	RFE0046	SP SHELL WEIGHT	1	

120	RG0008	T/T RUBBER MAT	1	
121	SFGC122-01	RUBBER	3	
122	SFER190-01	LUG TERMINAL	2	
123	REZ0668	LED SPACER	1	
124	RG0219Z-K	ORNAMENT	1	
125	SFER1C	LUG	2	
126	XSB3+8FZ	SCREW	2	
127	RMQ1208	TAPE	1	
128	SFPEW17201	WASHER	1	
129	SMXB5	SW BARRIER	1	(EB,GN)
130	SFNZ520M31	CAUTION LABEL	1	(E,EB,GN)
130	SFNZ520C32	CAUTION LABEL	1	(PP)
131	RQLA0263	CAUTION LABEL, V.SETTING	1	(E,EB,GN)
131	SFUP015-13	COVER	1	(PP)
132	SFNZ10EC01	CAUTION LABEL	1	(E,EB,GN)
133	RQLA0385	LAVEL, V.INDICATION	1	(E,EB,GN)
134	SFNZ023S01	CAUTION LABEL	1	(E,EB,GN)
135	RQLS0091-1	DOC LABEL	1	(PP)
136	RQLS0102	FCC LABEL	1	(PP)
137	RQLS0134-1	CAUTION LABEL	1	(E,EB,GN)
137	SQZB8	CAUTION LABEL	1	(PP)
A1	RQT7019-E	O/I BOOK	1	(E)Spanish, French, Germany, Duch, Swedish, Itarian, Polish, Czech, Danish
A1	RQT7020-B	O/I BOOK	1	(E,EB,GN) English
A1	RQT7021-Y	O/I BOOK	1	(PP) English, Canadian French
A3	SFWE010A	EP RECORD ADAPTOR	1	
A4	RHN26003	CARTRIDGE NUT	2	
A5	SFCZV8801-1	SCREW	2	
A6	SFPEV9801-1	SCREW	2	
A7	SFPEW9601	WASHER	2	
A8	SFPZB3501	SHELL WEIGHT	1	
A9	SFPWG17202	AUXILIARY WEIGHT	1	
A10	SFK0135-01	OVERHANG GAUGE	1	
A11	RG0005Z	DISC SLIP SHEET ASSY	1	
A12	RQLC0142-1	TECHNICS LABEL	1	
A13	RQCA1082	NOTE SHHET	1	(E)
A13	RQCA1081	NOTE SHEET	1	(PP,EB,GN)
C1	ECA1HM471S	50V 470U	1	
C2	RCE1EU330BV	25V 33U	1	F2A1E330A014
C3	ECEA1EKA220B	25V 22U	1	

C5,C6	ECQM1223KZ3	125V 0.022U	2	
C101-03	RCE1EU330BV	25V 33U	3	F2A1E330A014
C104-07	ECQV1H104JM3	50V 0.1U	4	
C108	ECA1EAMI01XB	25V 100U	1	
C109,10	ECQV1H104JM3	50V 0.1U	2	
C111	ECQB1H562JF3	50V 5600P	1	
C112	ECEA1HKA4R7	50V 4.7U	1	
C201	RCE1AKA330BG	10V 33U	1	F2A1A330A011
C202,03	ECA1HAK010XI	50V 1U	2	
C204	ECQV1H473JM3	50V 0.047U	1	
C205	ECA0JM221	6.3V 220U	1	
C206	ECA1HAK010XI	50V 1U	1	
C207	ECCR1H101K5	50V 100P	1	
C208	ECCR1H220KU5	50V 22P	1	
C209	RCE1AU101BV	10V 100U	1	F2A1A101A019
C210,11	ECQV1H224JM3	50V 0.22U	2	
C212	RCE1HKA3R3BG	50V 3.3U	1	F2A1H3R3A015
C213	ECCR1H471K5	50V 470P	1	
C214	RCE1AU101BV	10V 100U	1	F2A1A101A019
C215	ECA1HAK010XI	50V 1U	1	
C216	RCE1AKA470BG	10V 47U	1	F2A1A470A011
C217-19	ECFF1H104ZF5	50V 0.1U	3	
C306	ECA1HAK010XI	50V 1U	1	
C501-03	ECFF1H104ZF5	50V 0.1U	3	
C504,05	ECCR1H220KU5	50V 22P	2	
C601	ECQU2A473MY	100V 0.047U	1	
CN101	EMCS0360L	PLUG	1	K1KA03A00188
CN102	EMCS0460L	PLUG	1	K1KA04A00211
CN103	EMCS0760L	PLUG	1	K1KA07A00105
CN104	SJT3907	CONNECTOR	1	K1KA09A00049
CN105	K1KA02A00008	CONNECTOR	1	
CN106	RJP3G18ZA	PLUG	1	K1KA03A00213
D1	D2SBA20	DIODE	1	B0EBKM000013
D3	MA4051M	DIODE	1	MAZ40510M
D201,02	SVDPR3902S-9	LED	2	B3AAA0000446
D203,04	LN21CAL	LED	2	
D204A	MA165TA5	DIODE	1	MA2C16500E
D205,06	LN21CAL	LED	2	
D301	MA4051M	DIODE	1	MAZ40510M
D401	B3AFA0000034	LED	1	
D501,02	LMW9A8BYB0A1	LED	2	
D504	MA4051M	DIODE	1	MAZ40510M
D505	B3AEA0000008	BLUE LED	1	
D506	MA4030LTA	DIODE	1	MAZ40300LF

F1	XBA2C025TB0	FUSE	1	K5D251BL0002 (E,EB,GN)
F1	K5D251AQ0002	FUSE	1	(PP)
F2	K5D102BA0003	FUSE	1	(E,EB,GN)
F2	XBA1F12NU14	FUSE	1	K5D122AD0002 (PP)
IC101	AN6675	IC	1	
IC201	AN6680	IC	1	
IC302	TC4011BP	IC	1	COJAAC000090
IC501	C2BAED000009	IC	1	
IC502	NJM78M05FA	IC	1	COCAADE00007
P1	RPG6576	PACKING CASE	1	(E)
P1	RPG6577	PACKING CASE	1	(EB)
P1	RPG6578	PACKING CASE	1	(GN)
P1	RPG6579	PACKING CASE	1	(PP)
P2	SFHH122-011	CUSHION,FRONT	1	
P3	SFHH122-02	CUSHION,REAR	1	(PP,E)
P3	RPN0710	CUSHION,REAR	1	(EB,GN)
P4	SFHD122N05-1	PAD, TOP	1	(PP,E)
P4	RPQ0365-1	PAD, TOP	1	(EB,GN)
P5	SFHD122-02	PAD(A)	1	
P6	RPN0306	PAD(B)	1	
P7	RPH0133	PROTECTION SHEET	1	
P8	SFHZ122-01	PROTECTION SHEET	1	
P9	XZB60X65A01X	POLYETHYLENE BAG	2	
P10	XZB45X50A01X	POLYETHYLENE BAG	1	
P11	SFYF09A15Z	PROTECTION BAG	2	
P12	XZB05X06C03Z	PROTECTION BAG	2	
P14	XZB25X34C03X	PROTECTION BAG	1	
P17	RPQ0608	PAD, TONEARM	1	
P18	RPQ0606	SPACER(A)	1	
P19	RPQ0607	SPACER(B)	1	
P20	RPQ1516	PROTECTION COVER	2	
P21	XZB10X30C03Z	PROTECTION BAG	1	(EB,GN)
PCB1	REP3461B-M	PCB ASS`Y MAIN	1	[RTL]
PCB2	REP2093A-1	PCB ASS`Y POWER	1	[RTL](E)
PCB2	REP2346A-1	PCB ASS`Y POWER	1	[RTL](EB,GN)
PCB2	SFDP122C09E	PCB ASS`Y POWER	1	[RTL](PP)
PCB3	REP3458BA-S	PCB ASS`Y PITCH CONTROL(1	1	[RTL]
PCB4	REP3458BB-S	PCB ASS`Y PITCH CONTROL(2	1	[RTL]
PCB5	REP3552A-S	PCB ASS`Y OPERATION	1	[RTL]
PCB6	REP3553A-S	PCB ASS`Y LED SW	1	[RTL]
PCB7	SFDH122-09E3	PCB ASS`Y, OUTPUT	1	[RTL]

Q1	2SD126507	TRANSISTOR	1	
Q2,Q3	2SD637-QRS	TRANSISTOR	2	2SD06370W
Q201	2SC1846-QRS	TRANSISTOR	1	2SC18460W
Q202	2SD637-QRS	TRANSISTOR	1	2SD06370W
Q203	2SC2458GR	TRANSISTOR	1	
Q501	UN4115	TRANSISTOR	1	UNR4115
R1	ERDS2FJ562	1/4W 5.6K	1	
R2	ERDS2TJ682T	1/4W 6.8K	1	
R3	ERDS2TJ272T	1/4W 2.7K	1	
R4,R5	ERDS2FJ471	1/4W 470	2	
R101	ERDS2FJ103	1/4W 10K	1	
R102	ERX1ANJ4R7H	1W 4.7	1	
R103	ERDS2FJ472	1/4W 4.7K	1	
R104	ERDS2FJ473	1/4W 47K	1	
R105	ERDS2FJ103	1/4W 10K	1	
R106	ERDS2FJ150	1/4W 15	1	
R107	ERX1ANJ1R5H	1W 1.5	1	
R108	ERDS2FJ103	1/4W 10K	1	
R109,10	ERX1ANJ4R7H	1W 4.7	2	
R201	ERG1ANJ561H	1W 560	1	
R202	ERDS2FJ103	1/4W 10K	1	
R203	ERDS2FJ470	1/4W 47	1	
R204	ERDS2TJ272T	1/4W 2.7K	1	
R205	ERDS2TJ124	1/4W 120K	1	
R206	ERDS2TJ183	1/4W 18K	1	
R207	ERDS2FJ563	1/4W 56K	1	
R208	ERDS2FJ224	1/4W 220K	1	
R209	ERDS2FJ334	1/4W 330K	1	
R210	ERDS2TJ183	1/4W 18K	1	
R211	ERDS2FJ472	1/4W 4.7K	1	
R212	ERDS2FJ151	1/4W 150	1	
R213	ERDS2FJ122	1/4W 1.2K	1	
R214	ERDS2FJ223	1/4W 22K	1	
R215	ERDS2FJ472	1/4W 4.7K	1	
R216	ERDS2FJ154	1/4W 150K	1	
R217	ERDS2FJ223	1/4W 22K	1	
R218	ERDS2FJ102	1/4W 1K	1	
R219	ERDS2FJ332	1/4W 3.3K	1	
R220	ERDS2FJ221	1/4W 220	1	
R221	ERDS2FJ471	1/4W 470	1	
R222	ERDS2FJ391	1/4W 390	1	
R304	ERDS2FJ561	1/4W 560	1	
R305	ERDS2TJ181	1/4W 180	1	
R306	ERDS2FJ223	1/4W 22K	1	
R307	ERDS2TJ272T	1/4W 2.7K	1	
R501	ERDS2FJ103	1/4W 10K	1	

R502	ERDS2FJ102	1/4W 1K	1	
R503	ERDS2FJ221	1/4W 220	1	
R504,05	ERDS2FJ820	1/4W 82	2	
R506	ERDS2FJ103	1/4W 10K	1	
R507	ERDS2FJ821	1/4W 820	1	
R508	ERDS2FJ472	1/4W 4.7K	1	
R508A	ERDS2FJ102	1/4W 1K	1	
R509,10	ERDS1TJ222	1/2W 2.2K	2	
R601	ERC12UGK335D	1/2W 3.3W	1	(EB,GN)
R601	ERDS1FJ4R7	1/2W 4.7	1	(PP,E)
S201,02	EVQQS204B	SW	2	
S203	SFDSSS01GL13	SW	1	K0KACG000006
S401	SFDS2M5L-C	SW	1	
S501,02	K0F122B00099	SW	2	
S601	SFDSSS5GL13P	SW	1	K0KACG000007
S602	SFDShxw01317	SW	1	K0ZZ00000489 (E,EB,GN)
T1	SFDZ122M01E	POWER TRANSFORMER	1	(PP)
T1	SFDZ122S01E	POWER TRANSFORMER	1	(E,EB,GN)
VR201	D2BCA54B0005	VR	1	
VR303	SFDZ122N11-4	SLIDE VR	1	
VR501	EVND8AA03B22	VR	1	
X201	RSXB4M13J01	CRYSTAL OSCILLATOR	1	H0H419400004
X501	RSXB4M13J01	CRYSTAL OSCILLATOR	1	H0H419400004
KIT1	RFKBL120M5GK	PITCH ADJ. VR	1	